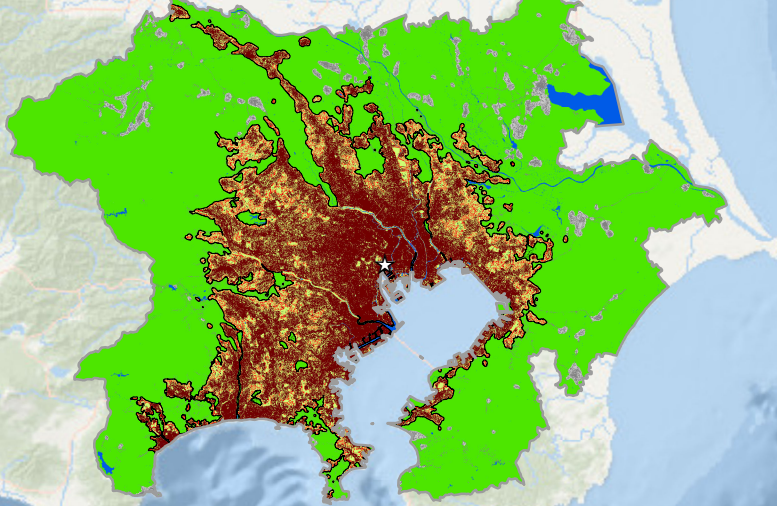
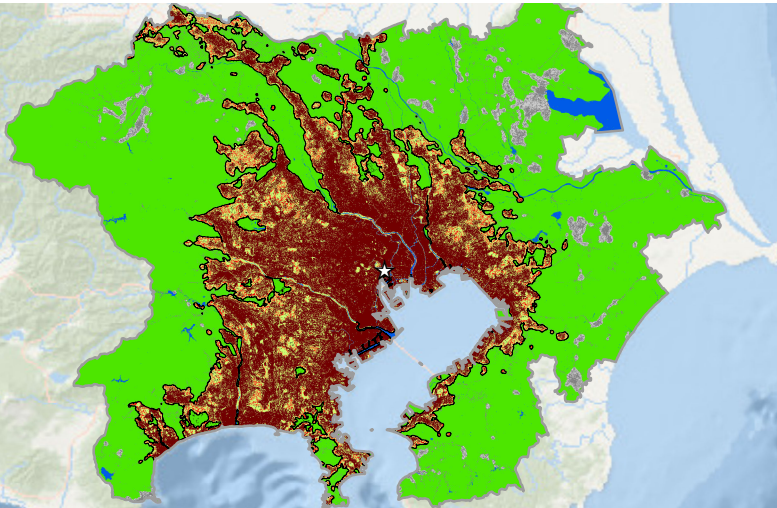


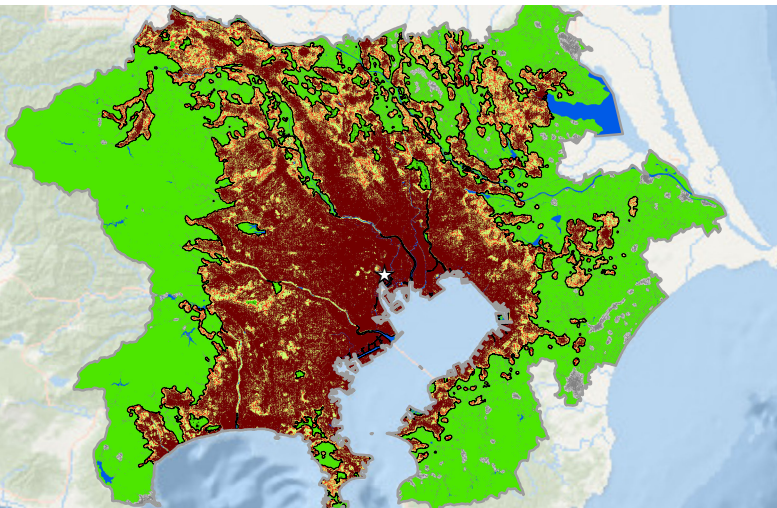
Dec-1990



Sep-2000



May-2014



### Tokyo, Japan 1990-2014

0 20 40 60 80 km



- |  |  |
|--|--|
|  Study area             |  Rural open space      |
|  Urban extent           |  Exurban built-up area |
|  Urban built-up area    |  Exurban open space    |
|  Suburban built-up area |  Water                 |
|  Rural built-up area    |  No data               |
|  Urbanized open space   |  CBD                   |